

# FA 45 Code reader V5

Top class code-reading performance – with ISO and AIM quality parameters

The new version 5 of the FA 45 code reader is now much more versatile thanks to an improved read algorithm and a considerable expansion to the range of functions. Barcodes and data matrix codes can now also be reliably read at a greater distance and from any angle. Thanks to integrated ISO and AIM quality parameters, the new code reader enables informative analysis of printed and direct part marked barcodes.

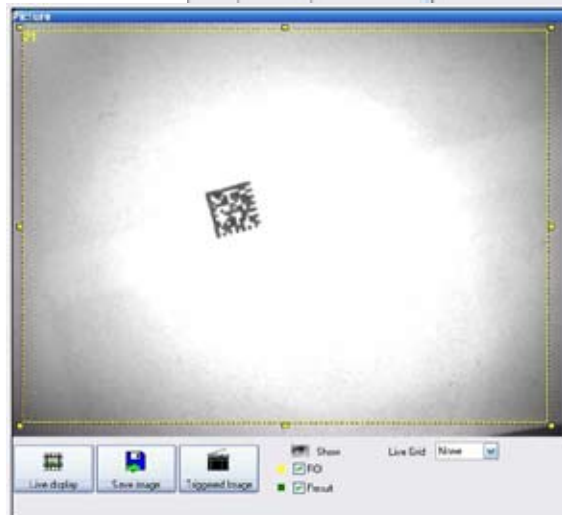
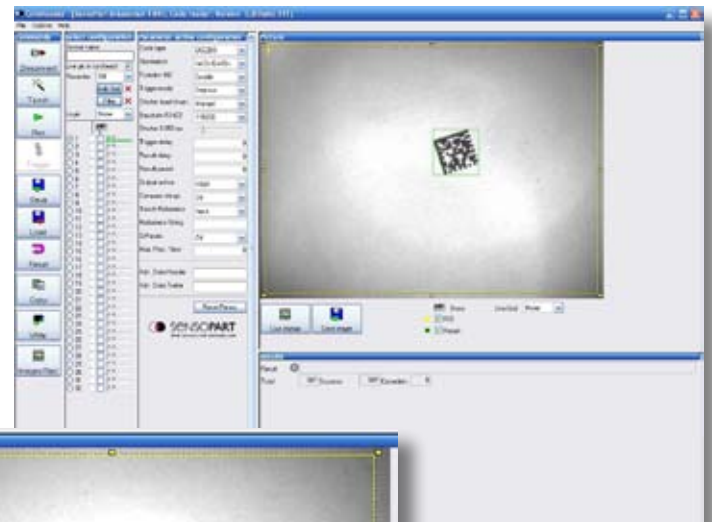
Sensopart is also reselling high-capacity hand-held readers, which are often indispensable during order picking at the end of a production line. Your complete ID solution is thus now available from one source!



**Compact, robust and versatile**  
The FA 45 vision sensor is the compact and robust solution for the most demanding detection tasks with its 45 x 45 x 65 mm dimensions. Other product variations for object and colour detection are also available in addition to the code reader version described here. The FA 45 is optionally available with integrated lighting and lens or with a C-mount connection and is particularly versatile thanks to an extensive range of accessories..

## A SUMMARY OF THE NEW FUNCTIONS:

- New improved read algorithm for barcodes
- Many additional barcode types can be read
- Analysis against ISO and AIM quality parameters for printed and direct part marked codes
- Focussing aid for simpler focus adjustment
- Flexible definition of serial output data (header, trailer, net data)
- Ethernet/IP and DHCP support
- 3 configurable result outputs
- Operator mode with PC viewer (image and result display, upload of configurations and image recording)
- Cycle time display also in triggered mode
- Optional image and result display on separate 5.6" touch screen (Vision Viewer CE, available as accessory)



# FA 45 Codereader V5

Technical data and product versions.

SensoPart  
 Industriesensorik GmbH  
 Nägelseestraße 16  
 D-79288 Gottenheim  
 Tel. +49 7665 94769-0  
 Fax +49 7665 94769-765  
 www.sensopart.com



FA 45 Codereader V5	
<b>Electrical data</b>	
Typ. cycle time	100 ms (1 evaluation)
Operating voltage	24VDC +/- 10% (absolute maximum values 18-30V)
Residual ripple	< 5 V ss
Current consumption (without I/O)	max. 200 mA
Inputs IN1 / IN2	High 10 ... 24V (+10%), Low 0 ... 3V
Trigger input	rising edge, 10V ... Ub
Outputs OUT 1 ... 4	PNP (N.O., Pull-up-MOSFET)
Output current (per output)	200 mA (max. 9.6 W)
Short-circuit protection (all outputs)	yes
Reverse battery protection	yes
Interfaces	Ethernet (LAN), RS422
Protection class	2 (50V)
Power-on delay	approx. 6 s after power on

FA 45 Codereader V5	
<b>Optical data</b>	
No. of pixels, sensor technology	640 (H) x 480 (V), CCD (S/W)
Integrated measuring lighting	white light or red light LED
Integrated lens, focal length	6 mm   12 mm (focal position adjustable)
Min. measuring distance in mm	20   20
Min. field of view X *Y in mm	18 x 14   8 x 6
Range of depth of focus	approx. +/- 5 % of meas. distance
<b>Mechanical data</b>	
Length x width x height	64 x 45 x 45 mm
Weight	approx. 170 g
Ambient operating temperature	-0 °C ... 50 °C (80 % air humidity, not condensed)
Storage temperature	-20 °C ... 50 °C (80 % air humidity, not condensed)
Protection standard	IP 65/67
Connections	plug M12 8-pin, Ethernet M12 8-pin, Process M12 5-pin
Casing material	aluminium, plastic
Vibration/Shock	EN 60947-5-2

11/09 068-14309

Part name FA 45	Order no.	Lighting	Optics	Features	Remarks
FA 45-300-WCC-CRO6 HS6	522-91111	white	6 mm	no quality parameters	Supported codes: ECC 200, QR-Code, PDF 417, Codabar, Code39, Code93, Code128, EAN128, EAN-8, EAN-13, Code25 Industrial, Code25 Interleaved, Pharmacode, RSS14, UPC-A, UPC-E
FA 45-300-WCC-CRO12 HS6	522-91112	white	12 mm		
FA 45-300-CC-CROCS HS6	522-91113	external	C-Mount, dependent on lens		
FA 45-300-RCC-CRO6 HS6	522-91114	red	6 mm		
FA 45-300-RCC-CRO12 HS6	522-91115	red	12 mm		
FA 45-300-WCC-CRO6 ES6	522-91146	white	6 mm		
FA 45-300-WCC-CRO12 ES6	522-91147	white	12 mm		
FA 45-300-CC-CROCS ES6	522-91148	external	C-Mount, dependent on lens		
FA 45-300-RCC-CRO6 ES6	522-91149	red	6 mm		
FA 45-300-RCC-CRO12 ES6	522-91150	red	12 mm		
				including quality parameters	

Part name Scanner	Order no.	Description	Remarks
DS6707-SR	534-91000	Basic model for printed codes, wired	All these scanners have a resolution of 640 (H) x 480 (V) pixel; reading distance 2.5 cm to 35 cm
DS3407-DP	534-91001	DPM scanner, wired	
DS3478-DP	534-91002	DPM scanner, wireless	
DS6707-DP	534-91003	DPM scanner, wired, diffuse light	