


# FA 46

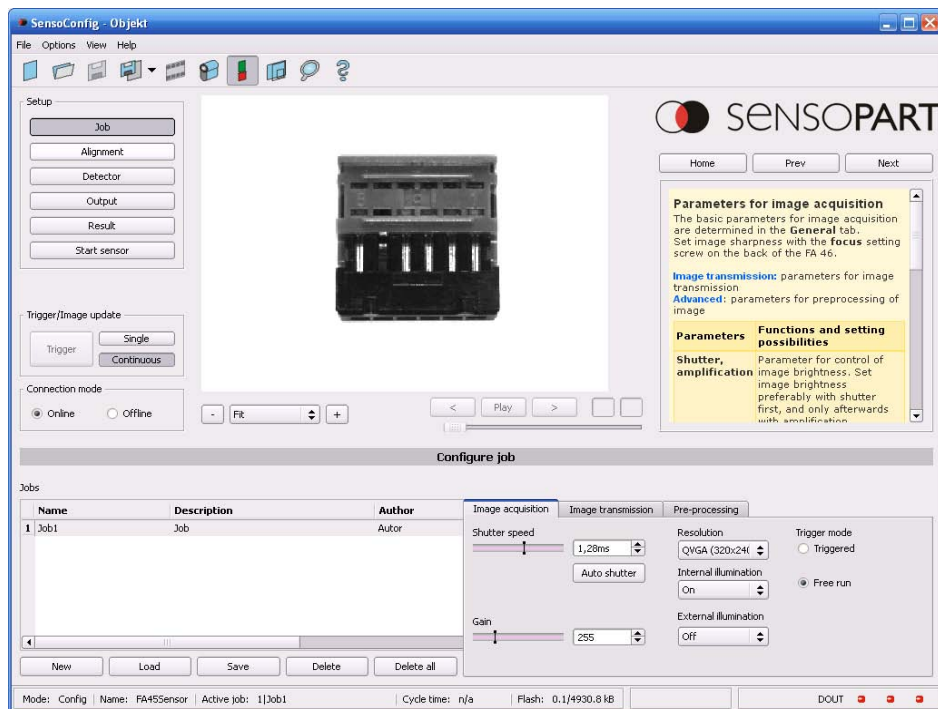
Vision sensor for object detection.

- 
- A close-up photograph of the FA 46 vision sensor. The sensor is housed in a dark, industrial-looking enclosure. Several bright, circular light sources are visible, emitting beams of light. Two prominent red laser lines extend from the sensor towards the right side of the frame, creating a strong contrast against the dark background. The overall scene is dimly lit, emphasizing the sensor's active components.
- Presence check
  - Completeness check
  - Part differentiation
  - Position check / Position detection
  - Rejection check
  - Sorting

NEW: Precise determination of position  
and angle thanks to  
contour detector

# FA 46

Vision Sensor for object detection with second-generation user interface



- For
- Automation
  - Special machine construction
  - Assembly & materials handling
  - Automotive industry and suppliers

New: Ideal for Pick & Place and Robotics thanks to a very accurate position detection by means of a contour detector

01/10

### Even more powerful

- Part detection and position tracking
- Position detection of parts, e.g. on conveyor belts (X/Y position and rotational position)
- Extended logic functions (multi-stage, combined and formula mode)
- User mode with viewer (image and result display, job upload and recorder images)
- Different password levels
- Ethernet/IP
- Customer-specific, flexible compilation of output data
- 3 configurable result outputs

### Groundbreaking operating concept

- Intuitive user interface
- Operation with step-by-step, sequentially guided navigation
- Particularly clear organisation with jobs and detectors
- Context-sensitive online aid
- Offline simulation with filmstrip navigation
- Online / offline switching

### Product versions

#### FA 46 301

#### FA 46 305

#### Functions

Number of jobs	1	any
Number of detectors	any	any
Position tracking	-	yes
Detector types	contour pattern matching grey level contrast	contour pattern matching grey level contrast
IO	2 x I / 4 x O	2 x I / 4 x O
RS422	-	yes
Ethernet	yes (no data)	yes
Encoder external	-	yes
<b>Lenses</b>		
6 mm, integrated	yes	yes
12 mm, integrated	yes	yes
C-Mount	-	yes
<b>Connectivity</b>		
Profibus	-	optional
EnIP	-	yes
<b>Visualisation</b>		
PC worker mode /Viewer	yes	yes